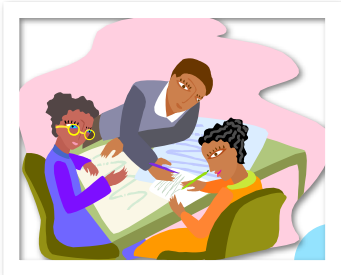


W.O.W. *Factor*

WORDS OF WISDOM FOR WISCONSIN FPS STUDENTS & COACHES



✧ Reading a Future Scene ✧

Reading the Future Scene carefully is the key to a great start in your problem solving experience. Consider the following tips as you begin your booklet.

ACTIVE READING

- Highlight, circle or underline key ideas.
- Look for important facts, dates, and agencies.
- Write notes to yourself in the margins (especially challenge ideas).

PAY ATTENTION TO DETAILS

Be careful not to make assumptions that aren't substantiated in the Future Scene. Also, be careful you don't "make up" ideas that you THINK are in the scene, but really aren't.

PICTURE IT

- Draw a diagram
- Make an outline
- Map it out
- Draw a picture

ONCE IS NOT ENOUGH

Be sure to read the Future Scene carefully, but also be prepared to read sections a second or third time. You want to refer to to the scene as you work through all of the problem solving steps. There are typically many details in a Future Scene, and it's difficult to remember all of them after one reading.

LOOK BACK

When writing challenges, you need to show a connection to the Future Scene. Look back in the scene to be sure what you say about it is actually true.

STUCK FOR IDEAS??

Assign each person 1 or 2 paragraphs from the Future Scene. Then take the time to reread those paragraphs even more carefully looking for more challenge ideas

CONSIDER THE CHARGE

Reread the charge in the last paragraph. Discuss what it means for your U.P. idea. Talk about at least 2 or 3 ideas for major issues before deciding what direction to take.

